



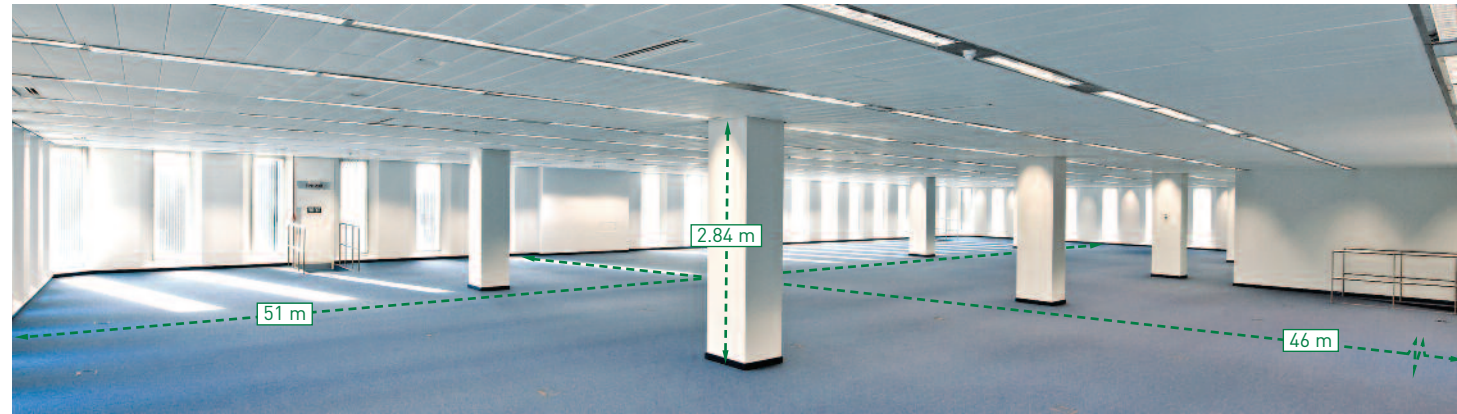
PARK SQUARE SPECIFICATION

Modern refurbishment...

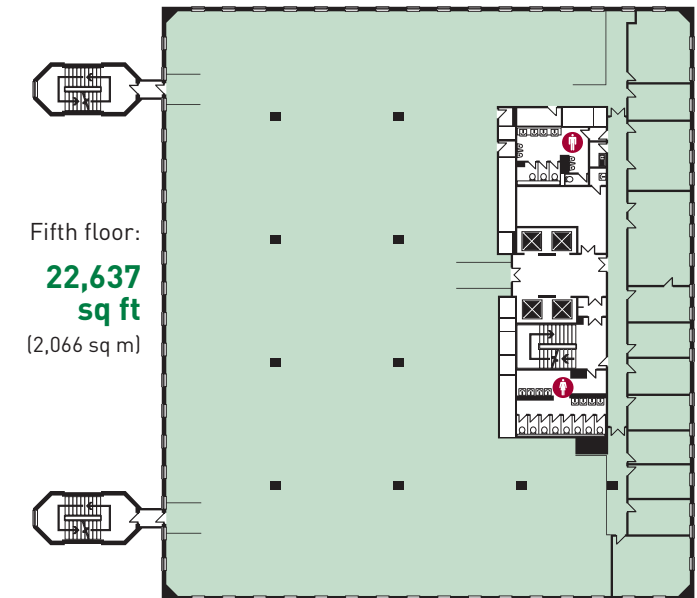
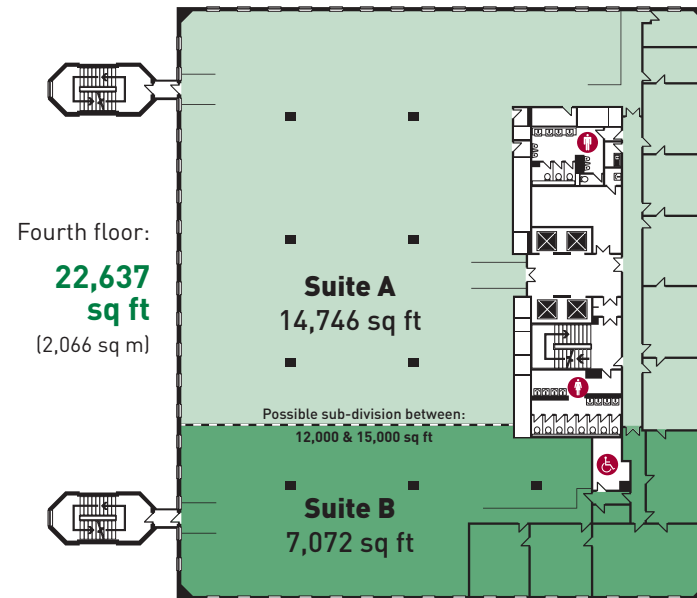
- Air-conditioning
- Full access raised floors
- Suspended ceilings with Cat 2 lighting
- Carpeted floor covering
- A range of internal offices and meeting spaces

...with excellent on-site amenities

- Ample car parking
- Impressive and manned reception foyer
- Four no. sixteen person passenger lifts
- On-site restaurant and conference/training facilities
- Nine hole putting green
- Full on-site 24-hour security and CCTV surveillance



FLOOR PLATES - Capable of occupancy of 1:6, available as individual floors or sub-division from c. 7,000 sq ft



For further information on the development's current availability, or alternative availability in the local area, please contact **Rhys Owen**.

Orbit
Developments
A MEMBER OF THE EMERSON GROUP

01625 588200
www.park-square.co.uk

www.orbit-developments.co.uk
email: orbit@emerson.co.uk

DISCLAIMER: Whilst the statements contained in these particulars are given in good faith and as a general guide to the property, they do not form any part of an offer or contract. Neither the Lessor or their Agents can accept responsibility for them. Interested parties must satisfy themselves by inspection, or otherwise, as to the correctness of these particulars. Orbit Investments (Properties) Limited Co. No. 2274745. Registered in England and Wales. [0512]

FOURTH & FIFTH FLOOR

PARK SQUARE

BIRD HALL LANE CHEADLE SK3 0XN

